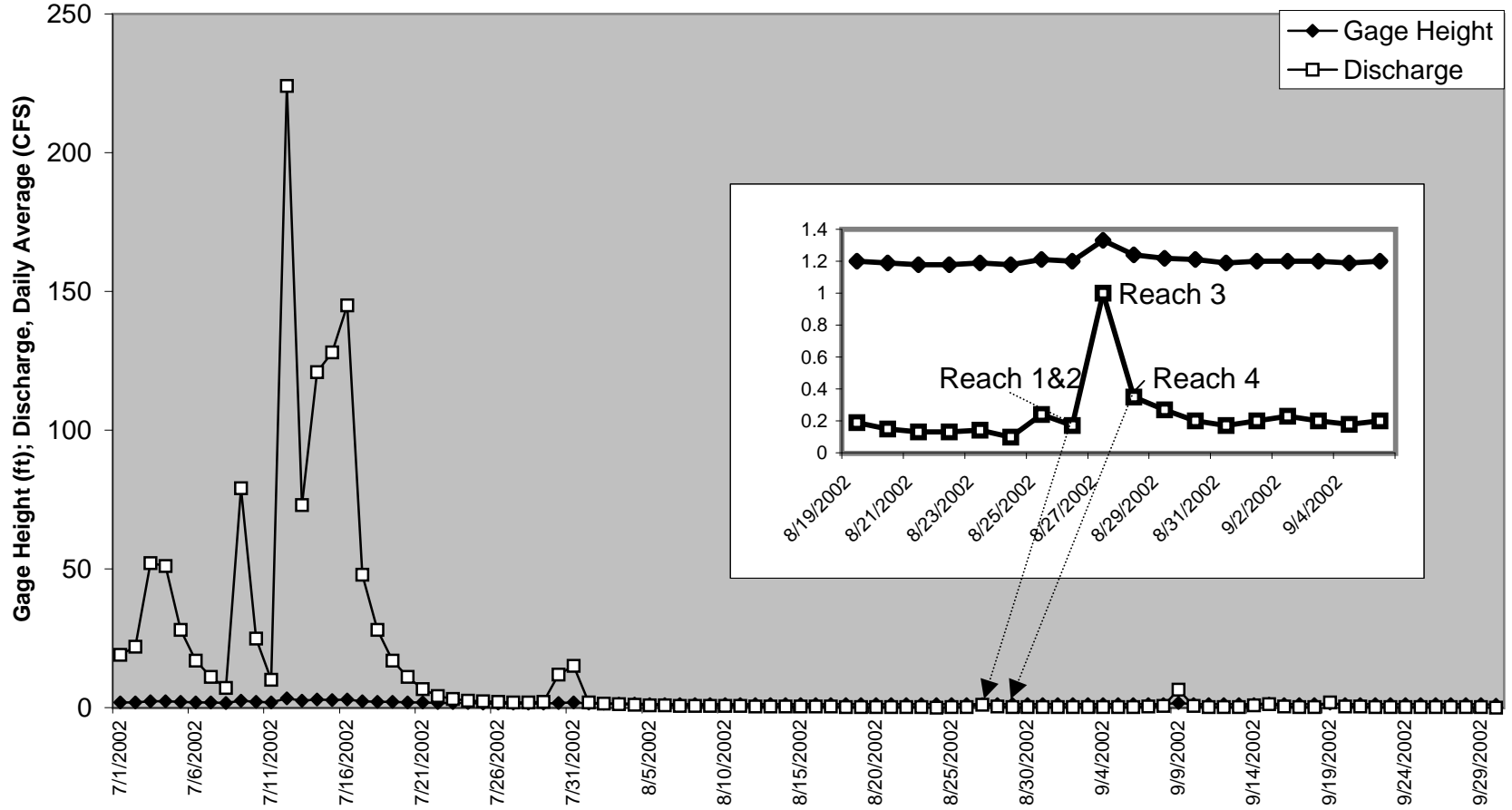
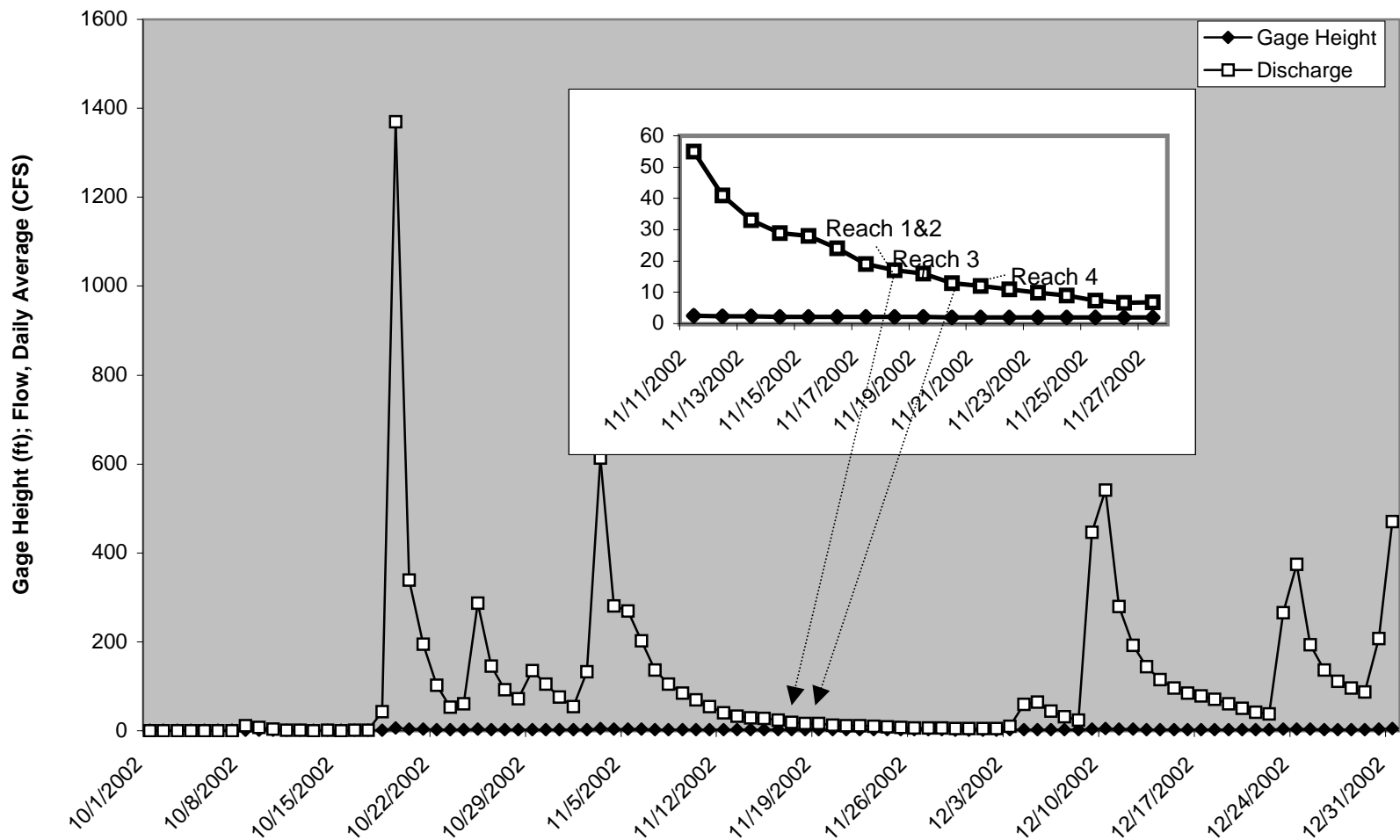


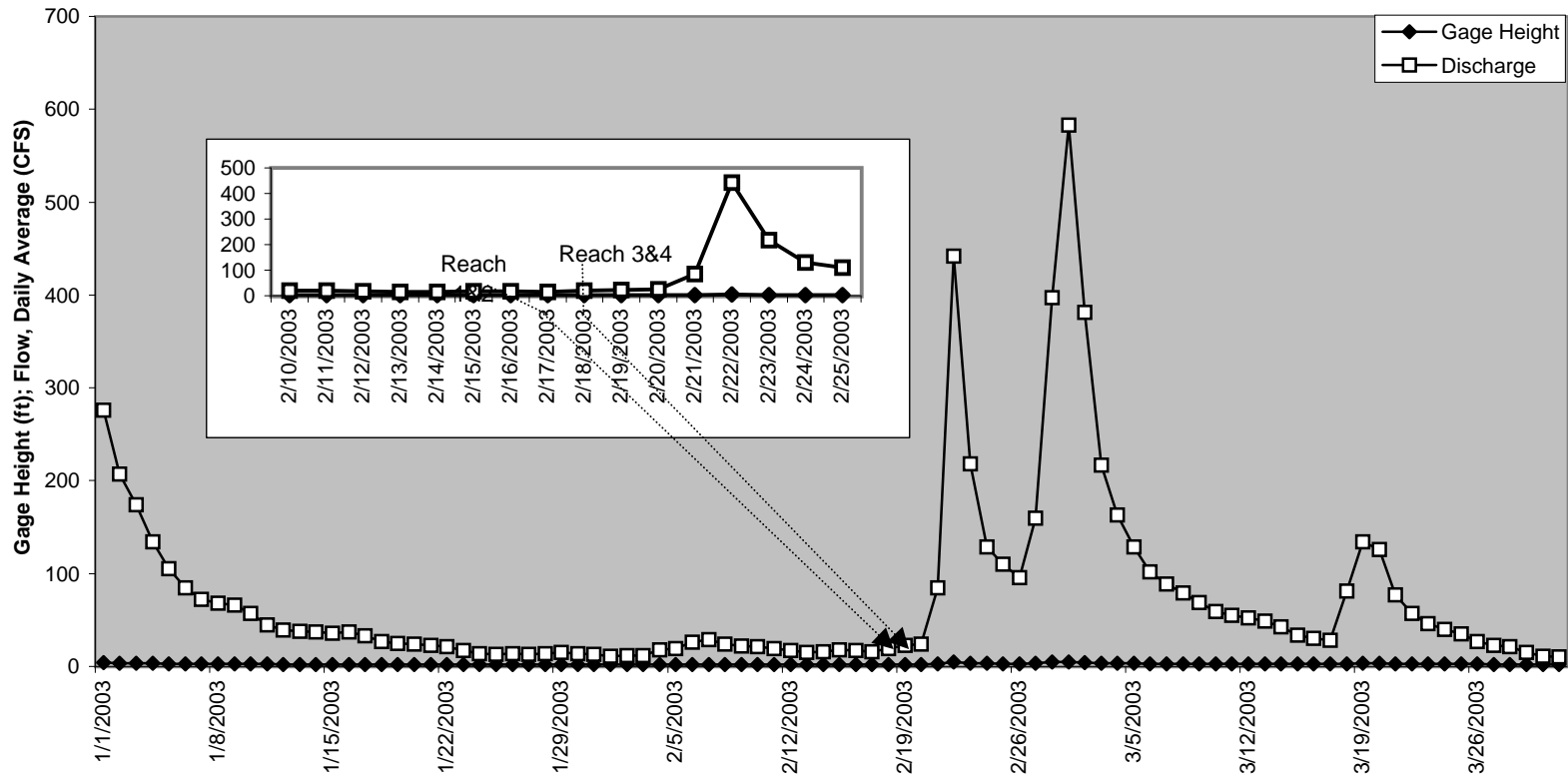
Summer 2022 Flow Conditions at Gainesville



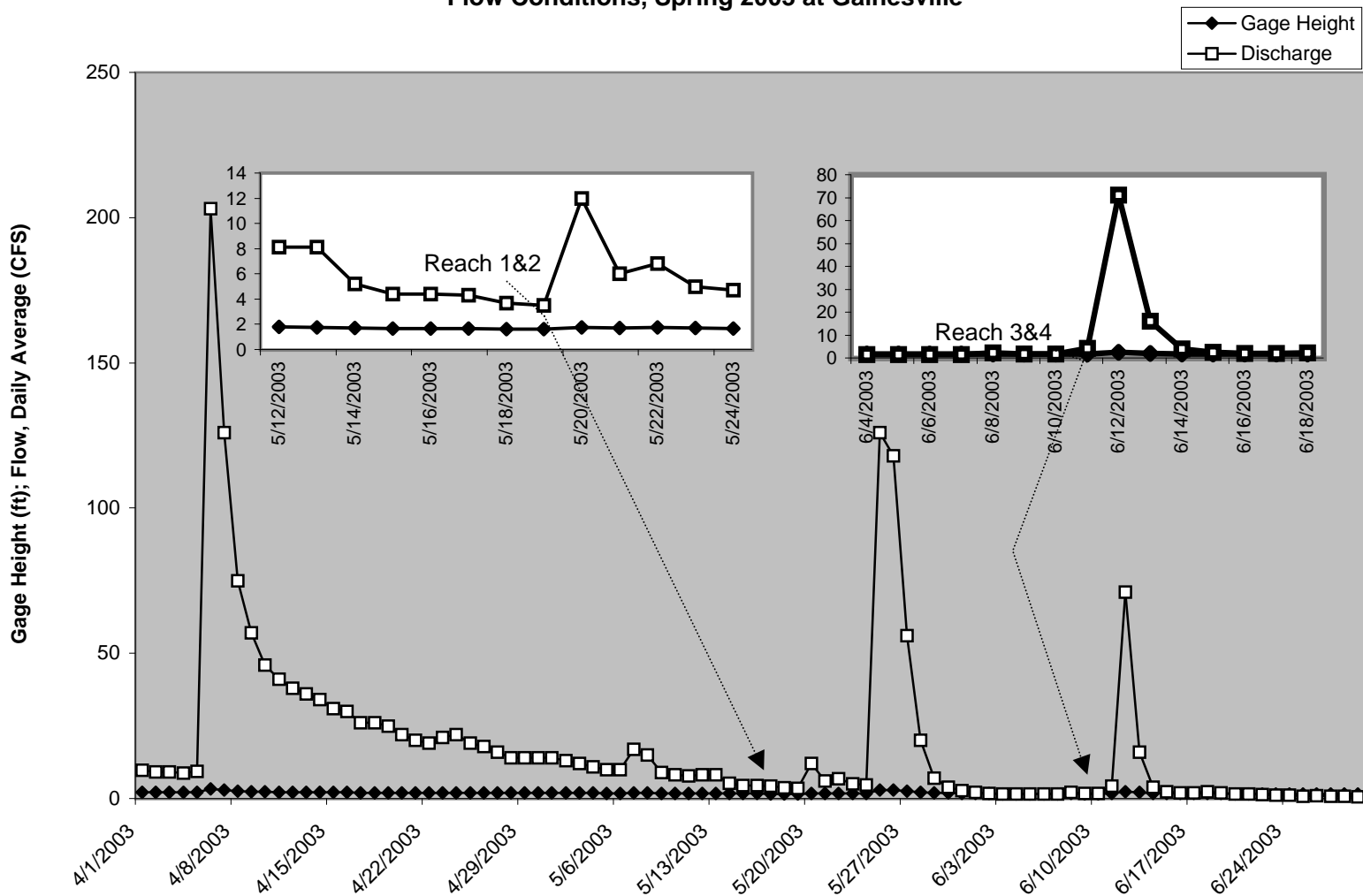
Fall 2002 Flow Conditions at Gainesville



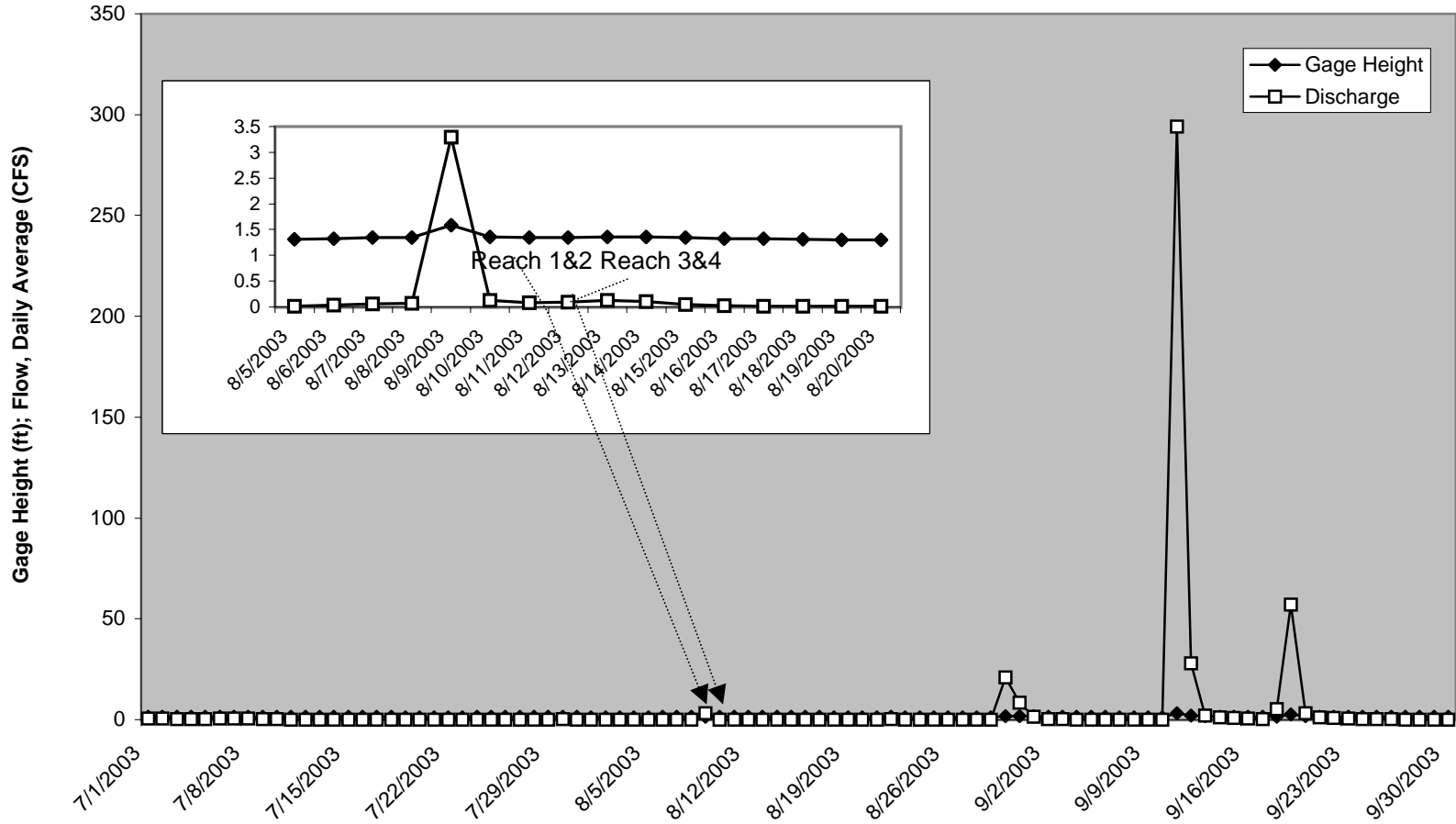
Winter 2003 Flow Conditions at Gainesville



Flow Conditions, Spring 2003 at Gainesville



Flow Conditions, Summer 2003, at Gainesville



Flow Conditions at Gainesville, Spring 2002 to Summer 2003

