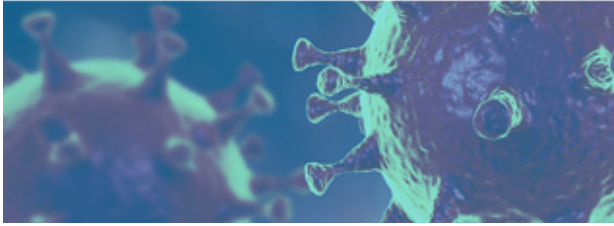


Coronavirus



To our customers, employees and the communities we serve:

The Coronavirus (COVID-19) situation continues to evolve, and maintaining water and wastewater treatment services, and reservoir and recreation services is important to our employees and the communities that we serve. Our commitment to service and the public's health remains a high priority. We want to share with you some of the current actions we are taking related to COVID-19.

- We are closely monitoring the situation and will make adjustments as necessary.
- Employees receive updates on information provided by the CDC, the WHO, state officials and, local public health officials.
- Hand sanitizer has been deployed to all locations.
- High-touch areas are sanitized.
- All work-related travel outside the state of Texas has been restricted.
- In-state conference attendance will not be permitted.
- In-person meetings will be kept to a minimum.
- COVID-19, [Wolf Creek Park Update](#).
- Visits to our management offices/treatment facilities by non-mission-critical visitors will be restricted.

We are committed to doing our part by communicating, practicing and reinforcing prevention measures to help ensure that our services continue. Working together, we will meet this challenge.

LINKS TO COVID-19 RESOURCES

CDC: <https://www.cdc.gov/coronavirus/2019-ncov/index.html>

White House: https://www.whitehouse.gov/wp-content/uploads/2020/03/03.16.20_coronavirus-guidance_8.5x11_315PM.pdf

World Health Organization: <https://www.who.int/>

Texas Department of State Health Services: <https://dshs.texas.gov/coronavirus/>

Tarrant County Public Health: <https://access.tarrantcounty.com/en/public-health.html>

Dallas County Public Health: <https://www.dallascounty.org/departments/dchhs/>

Denton County Public Health: <https://dentoncounty.gov/Departments/Health-Services/Denton-County-Public-Health.aspx>

Houston Health Department: <https://www.houstontx.gov/health/>

Department of Homeland Security: <https://www.dhs.gov/>

Johns Hopkins Dashboard: <https://coronavirus.jhu.edu/map.html>

